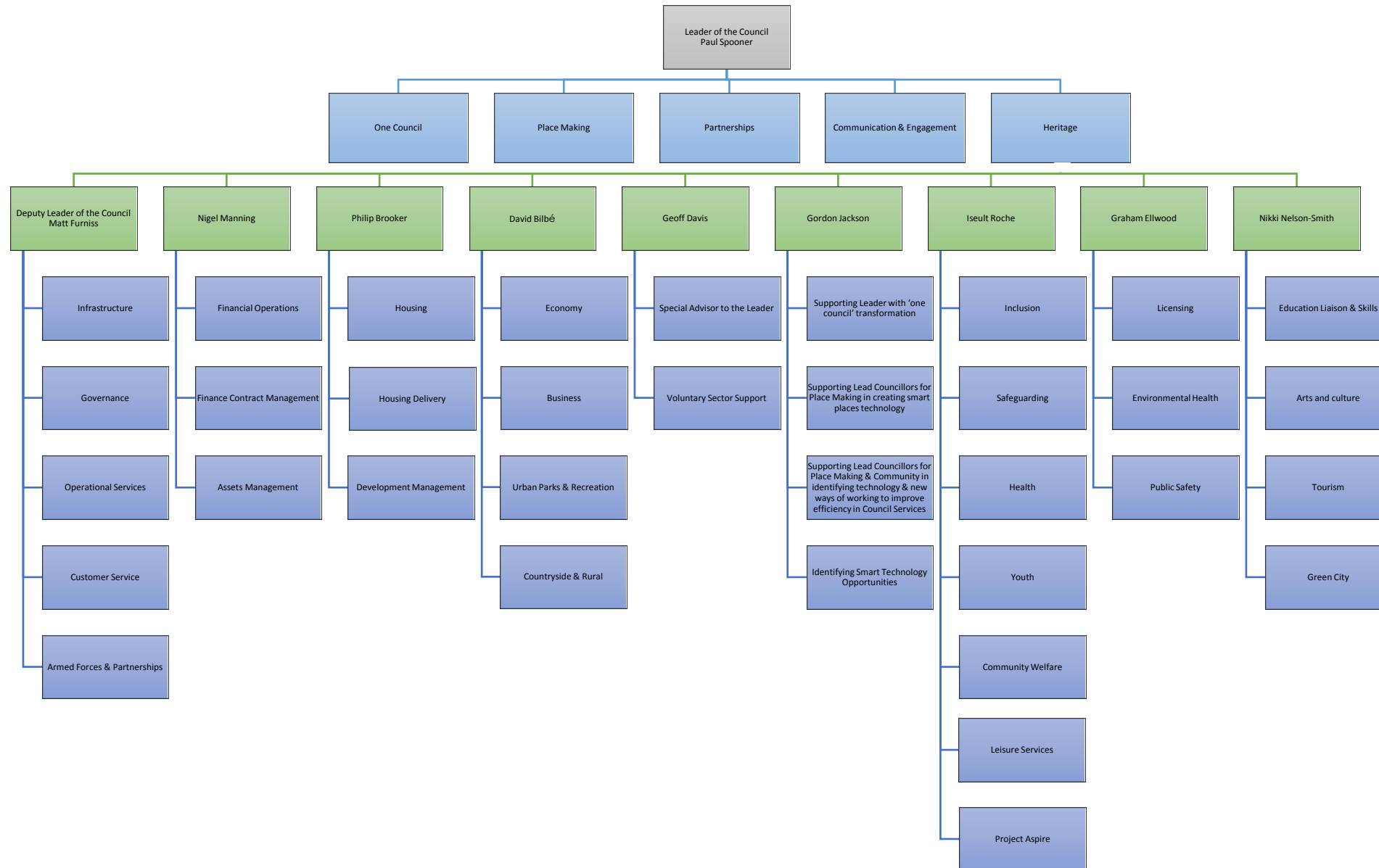


# Guildford Borough Council Executive

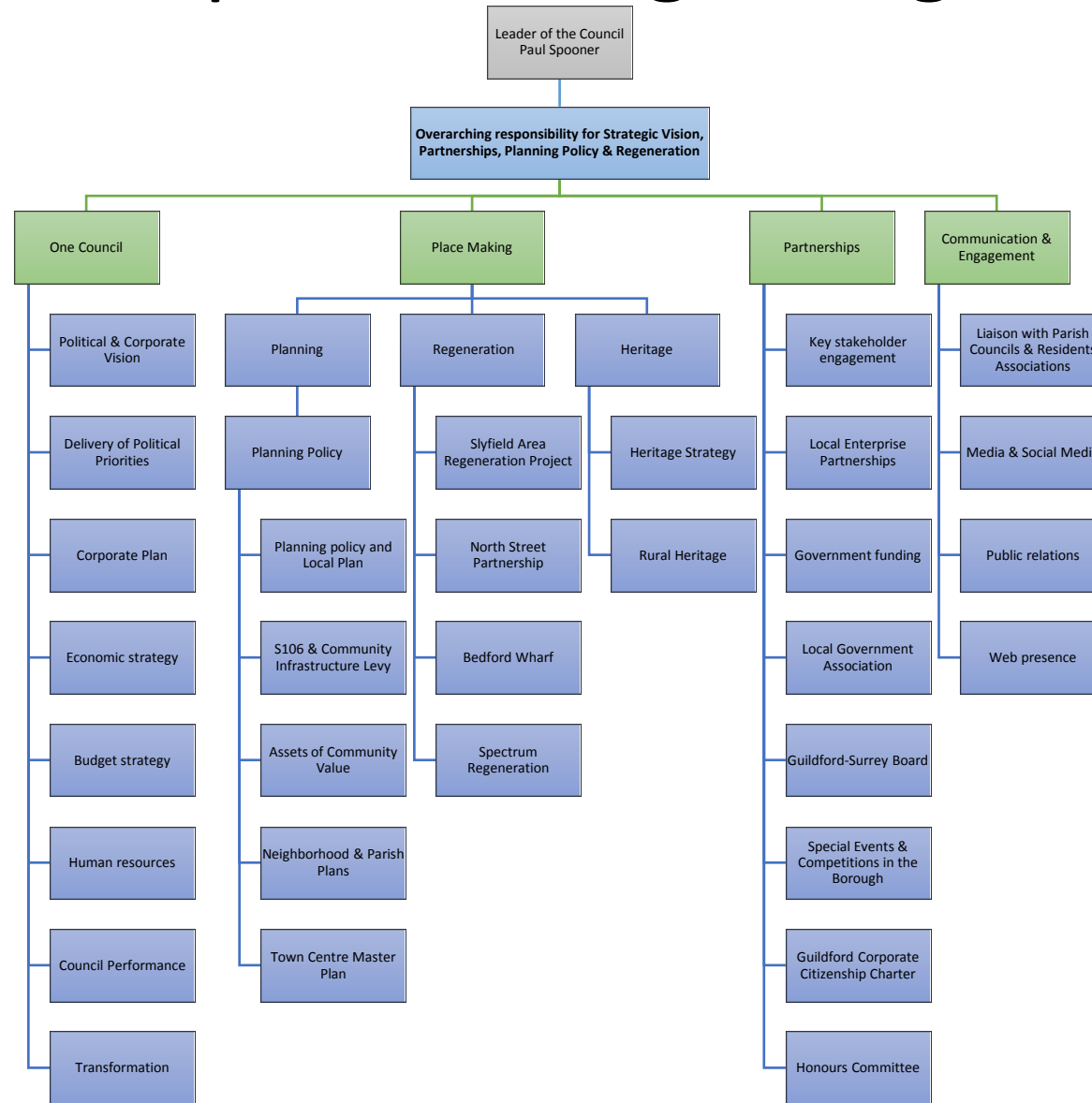


# Leader of the Council, Lead Councillor for Partnerships, Planning & Regeneration

- **Overarching responsibility for Strategic Vision, Partnerships, Planning Policy & Regeneration**

## Key Priorities

- **Political & Corporate Vision**
- **Strategic Planning Process**
- **Corporate Plan**
- **Place Making: Local Plan**
- **Place Making: Planning Policy**
- **Place Making: Regeneration**
- Delivery of Political Priorities
- Budget Strategy for implementing and monitoring for 'Best Value'
- One Council – HR & Transformation
- Communication & Engagement
- Heritage Strategy

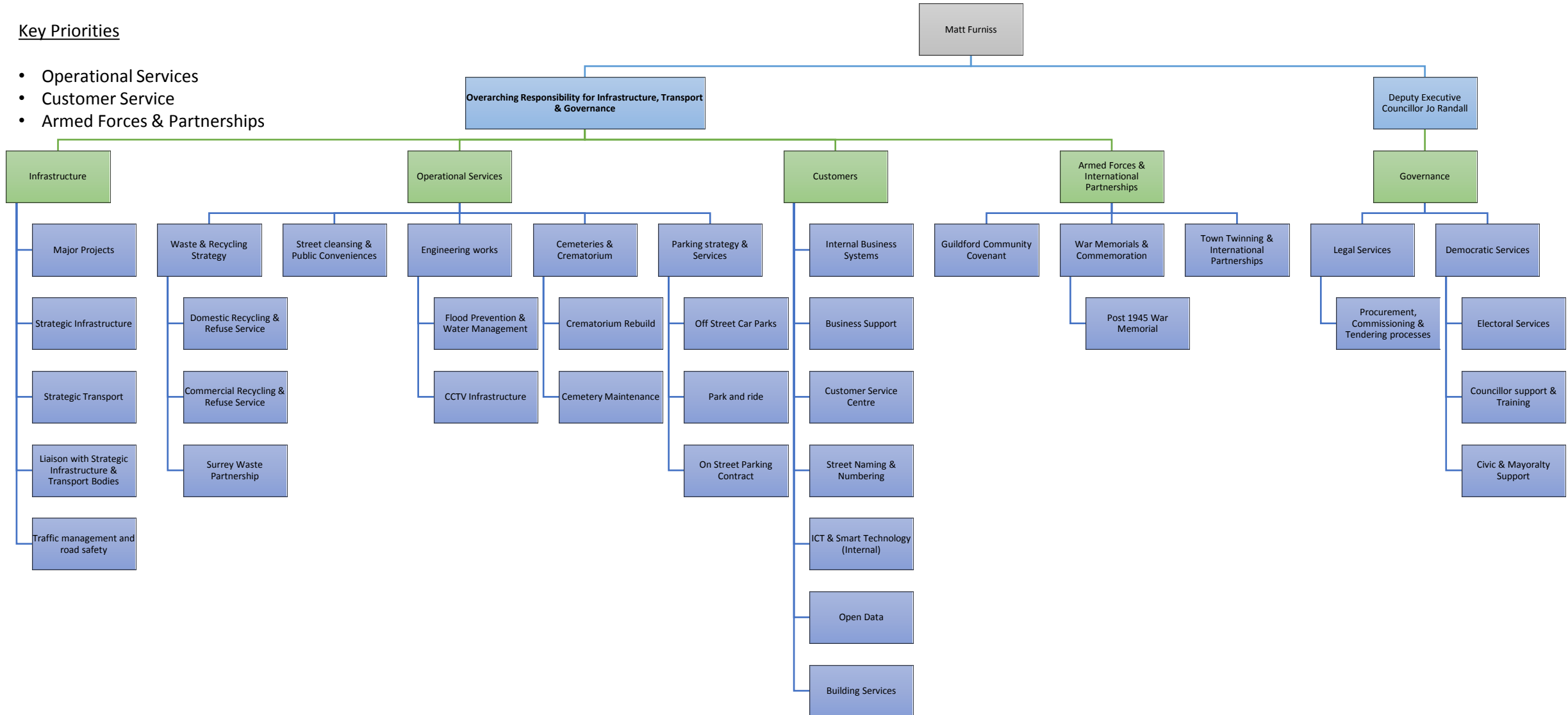


# Lead Councillor for Infrastructure & Governance

- **Overarching Responsibility for Infrastructure & Transport**
- **Overarching Responsibility for Governance**

## Key Priorities

- Operational Services
- Customer Service
- Armed Forces & Partnerships

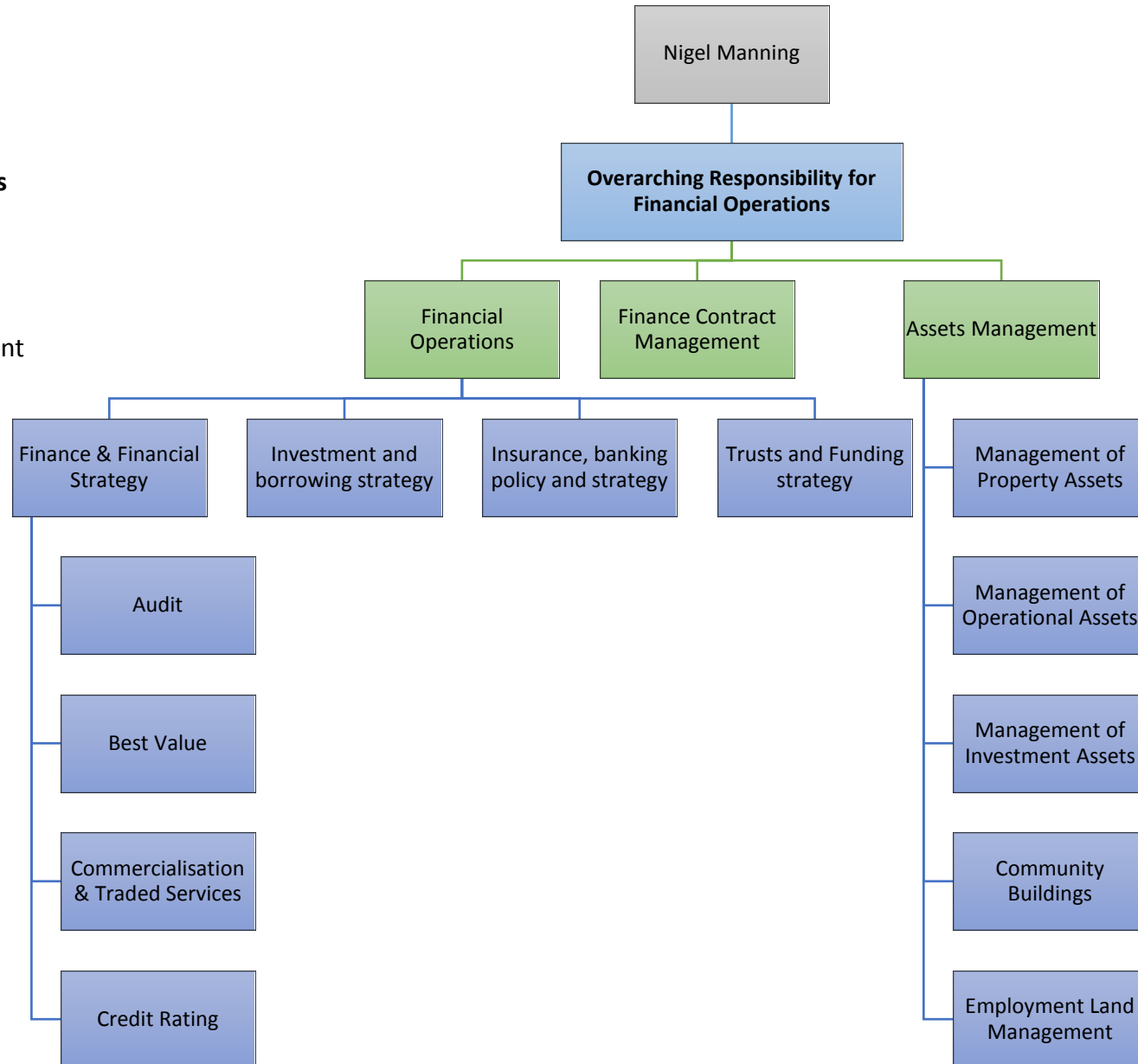


# Lead Councillor for Finance & Asset Management

- **Overarching Responsibility for Financial Operations**

## Key Priorities

- Assets Management
- Contract Management

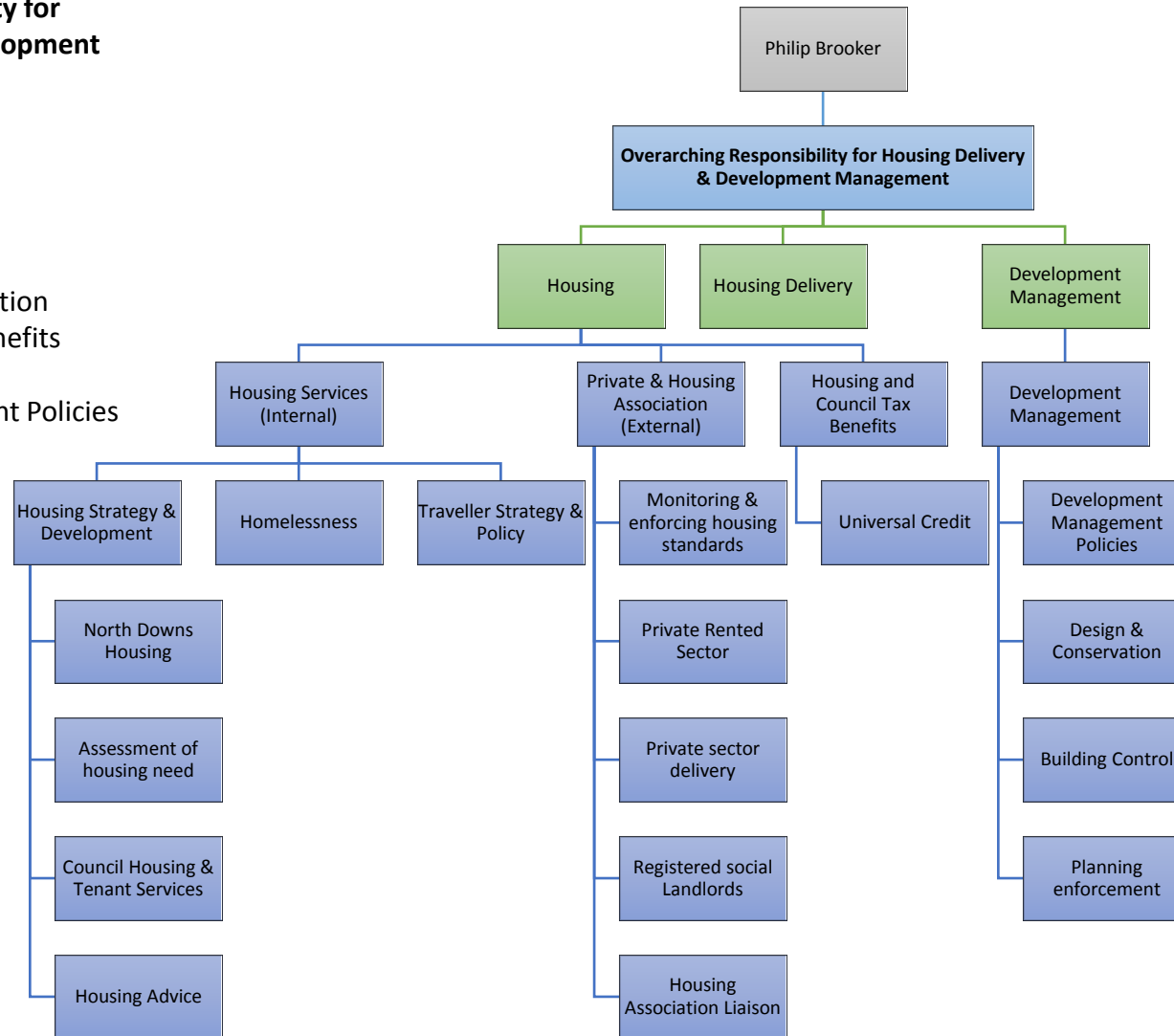


# Lead Councillor for Housing & Development Management

- **Overarching Responsibility for Housing Delivery & Development Management**

## Key Priorities

- Housing Services
- Housing Delivery
- Private & Housing Association
- Housing & Council Tax Benefits
- Universal Credit
- Development Management Policies

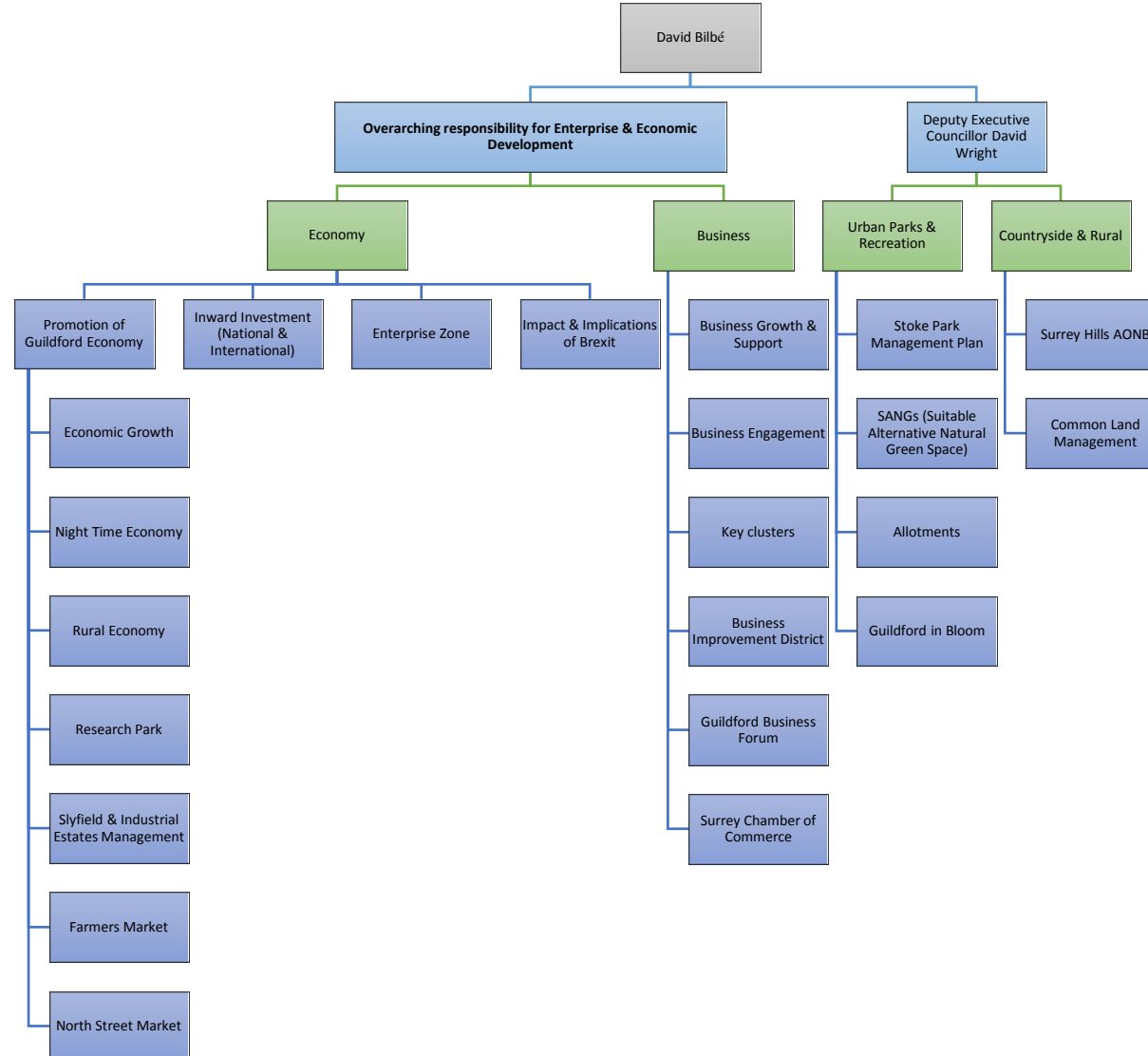


# Lead Councillor for Enterprise & Economic Development

- **Overarching responsibility for Enterprise & Economic Development**

## Key Priorities

- Promotion of Guildford Economy
- Business retention
- Business growth
- Experience Guildford (BID)



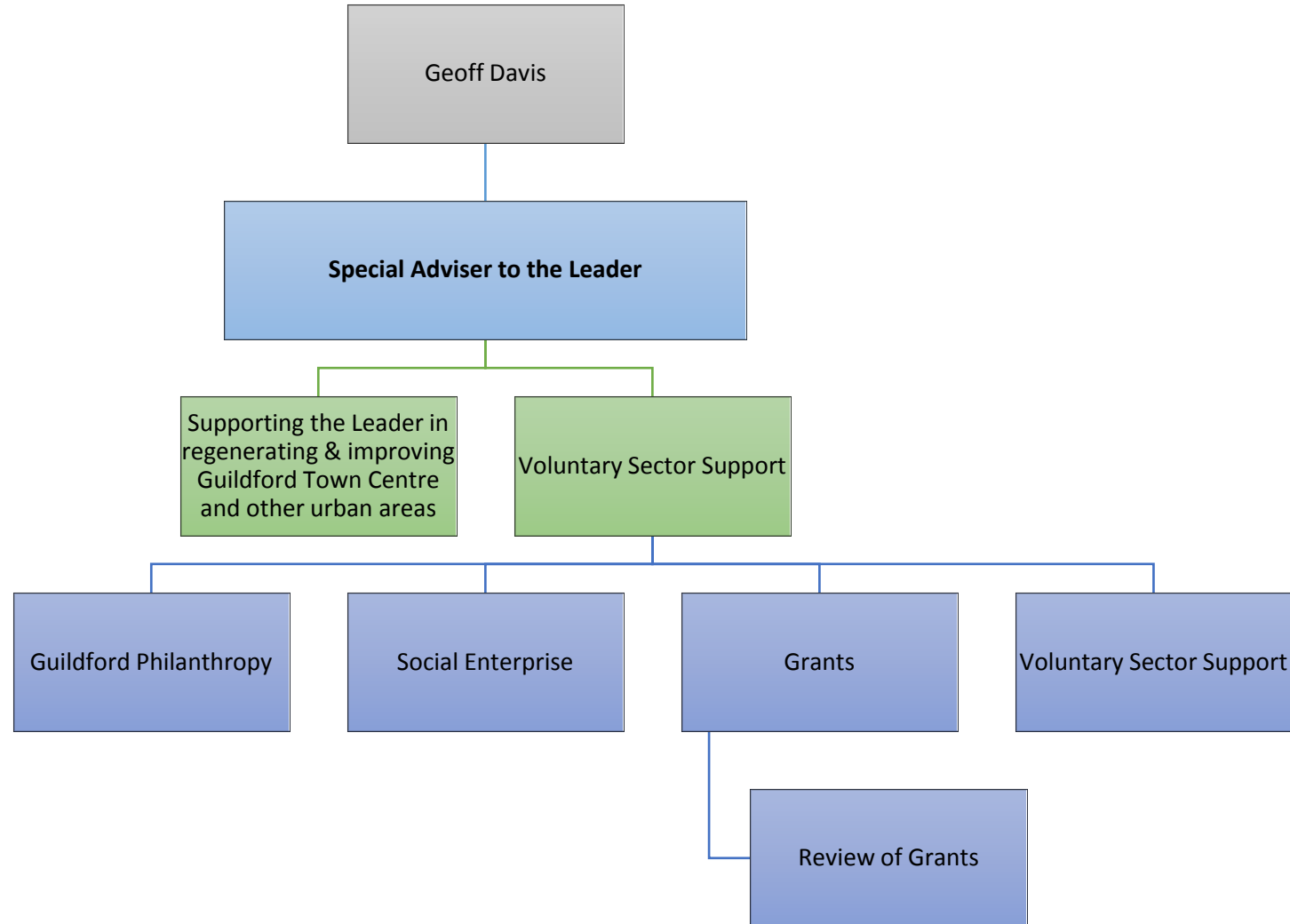
# Special Adviser to the Leader

## Lead Councillor for Social Enterprise & Voluntary Sector

- **Special Adviser to the Leader**

Key Priorities

- Supporting the Leader in regenerating & improving Guildford Town Centre and other urban areas
- Social Enterprise
- Guildford Philanthropy
- Grants
- Voluntary Sector Support

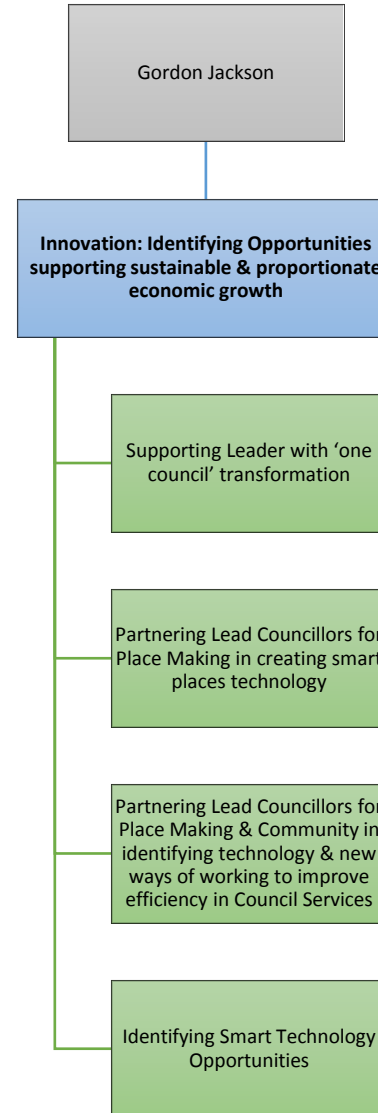


# Lead Councillor for Innovation & Transformation

- **Innovation: Identifying Opportunities supporting sustainable & proportionate economic growth**

## Key Priorities

- Supporting Leader with 'one council' transformation
- Supporting Lead Councillors for Place Making in creating smart places technology
- Supporting Lead Councillors for Place Making & Community in identifying technology and new ways of working to improve efficiency in Council Services
- Identifying Smart Technology Opportunities



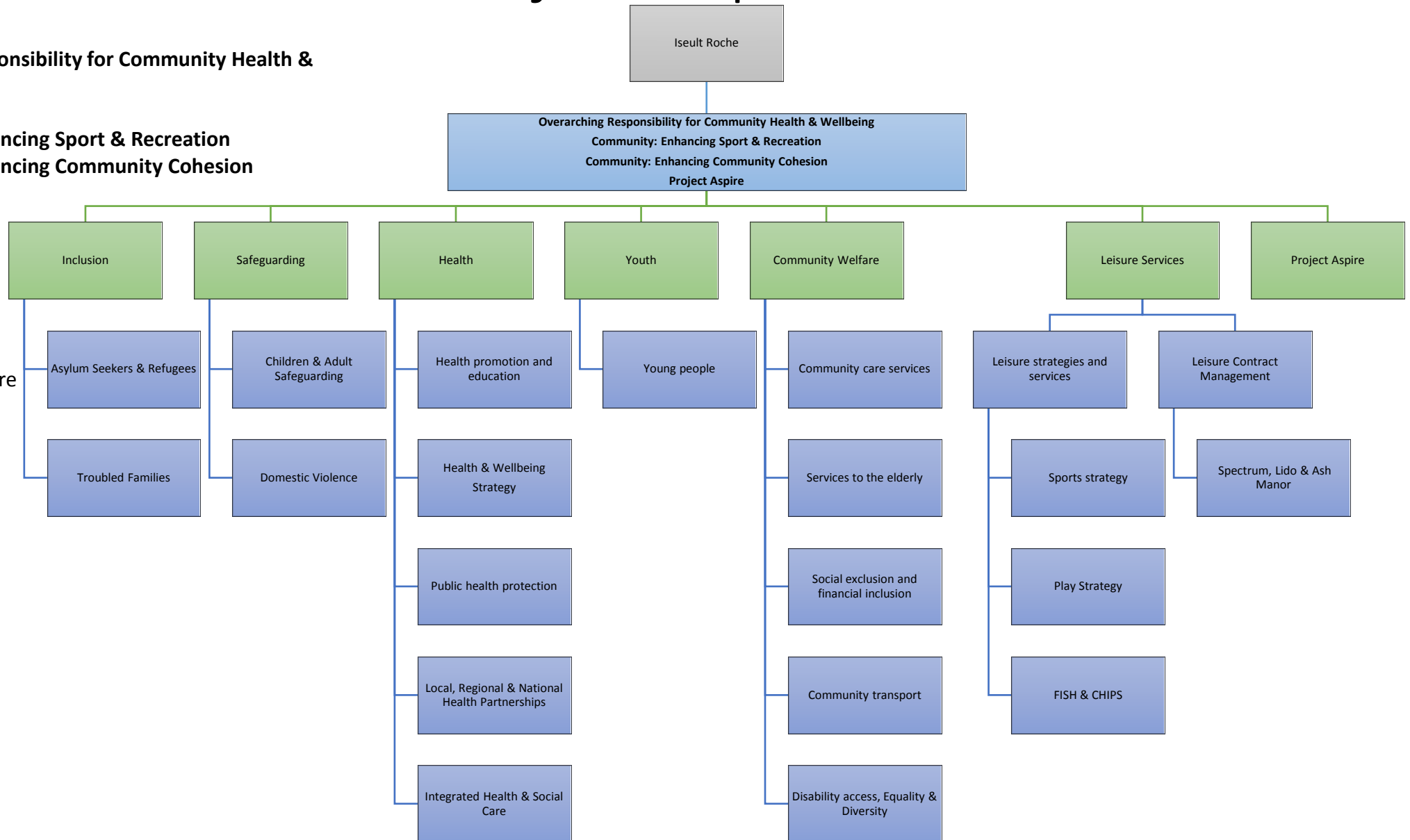


# Lead Councillor for Community Health, Wellbeing & Project Aspire

- **Overarching Responsibility for Community Health & Wellbeing**
- **Community: Enhancing Sport & Recreation**
- **Community: Enhancing Community Cohesion**
- **Project Aspire**

## Key Priorities

- Inclusion
- Safeguarding
- Health
- Community Welfare
- Leisure Services
- Youth

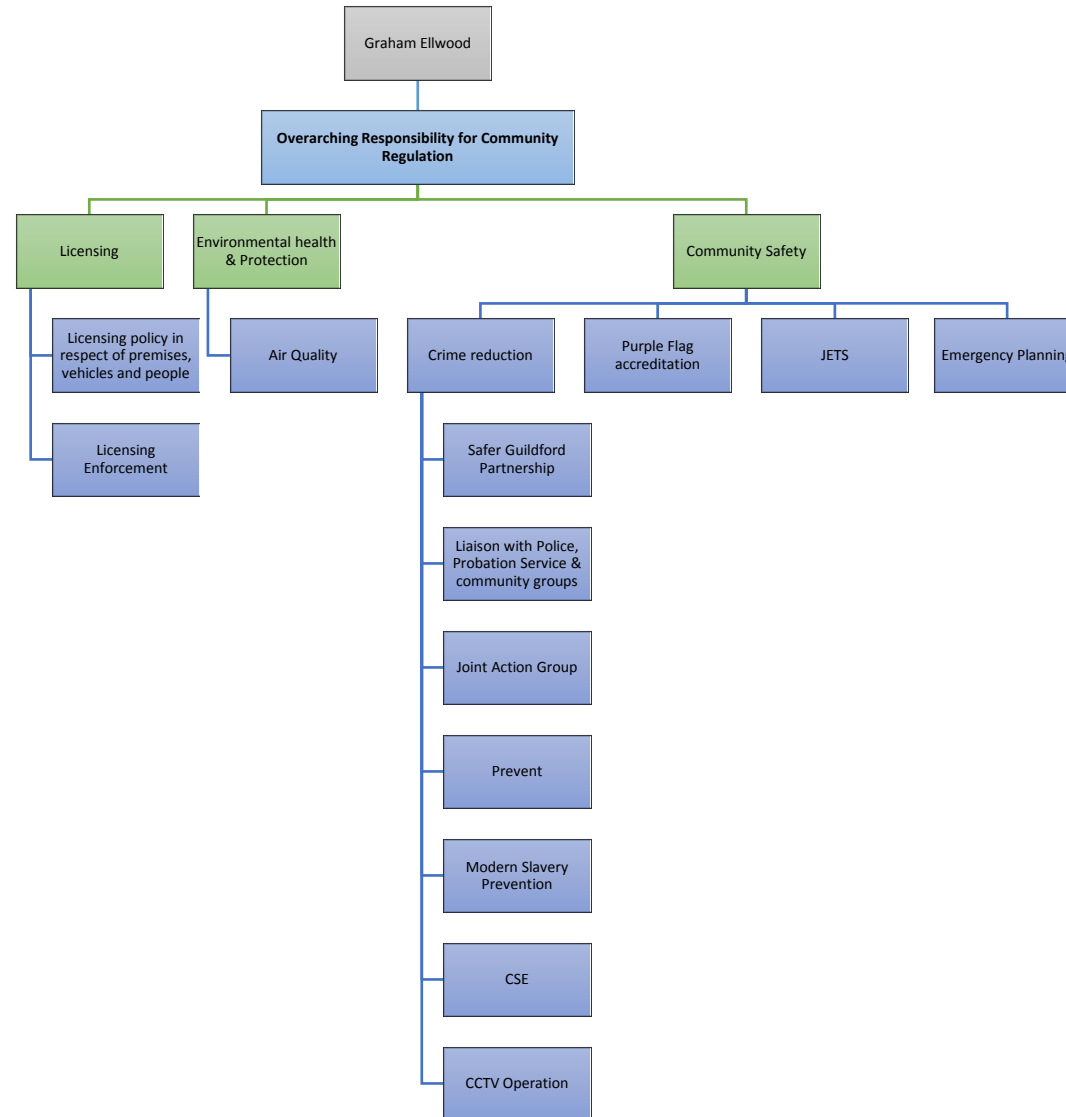


# Lead Councillor for Licensing, Environmental Health & Community Safety

- **Overarching Responsibility for Community Regulation**

## Key Priorities

- Licensing
- Environmental Health
- Public Safety
- Air Quality



# Lead Councillor for Skills, Arts & Tourism

- **Overarching Responsibility for Skills**
- **Overarching Responsibility for Enhancing Arts & Culture**

## Key Priorities

- Heritage: Delivering a new Museum
- Green City through Clean Growth
- Tourism
- Skills

